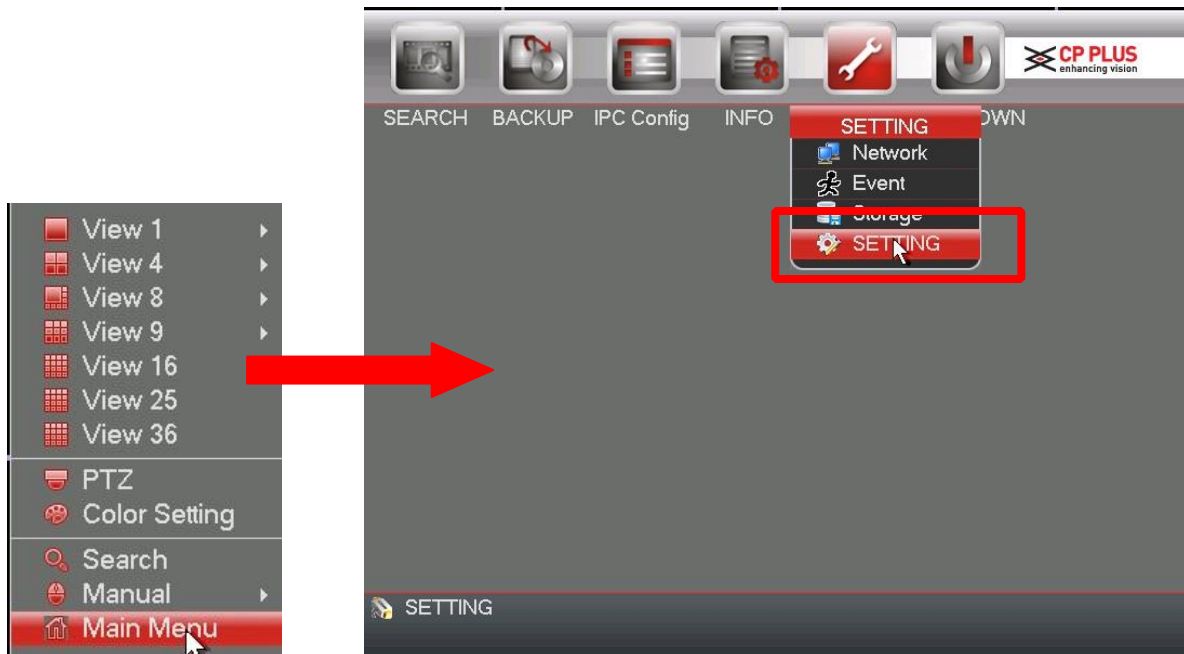


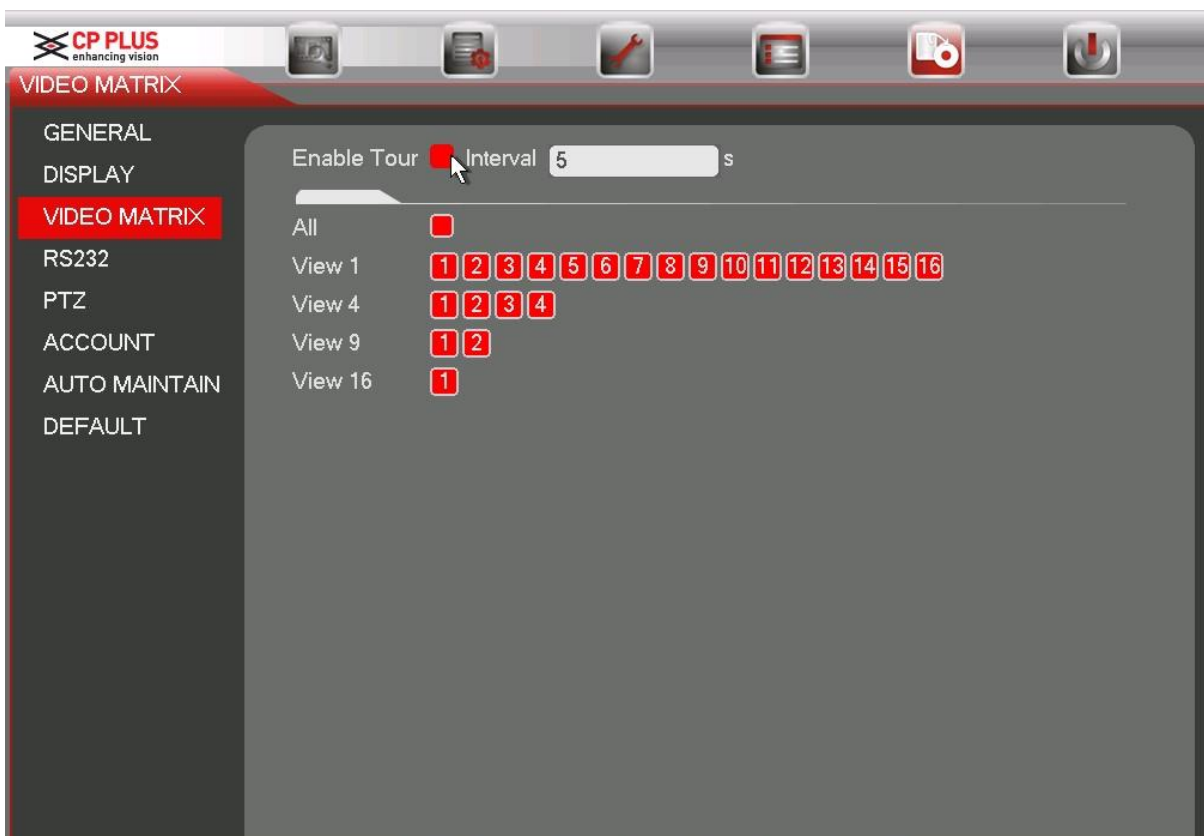
# How to Enable Video Matrix Settings for HDMI

## How to Enable Video Matrix:

- To control window split in Spot output you will have to go to **Main Menu** → **Setting** → **Video Matrix**.



- Here you can set matrix output channel and its interval.





Website: - [www.cpplusworld.com](http://www.cpplusworld.com)

Email id: - [sales@cpplusworld.com](mailto:sales@cpplusworld.com); [support@cpplusworld.com](mailto:support@cpplusworld.com)

---