

# CP-UNP-E3221L15-DFP

## 2MP WDR 32x IR Network PTZ Camera- 150 Mtr.

- 1/2.8" 2MP CMOS Image sensor (0.9071 centimeters)
- Max. 50/60fps@2MP
- Powerful 32x Optical zoom and 16x Digital zoom
- WDR(120dB), 2D/3D-DNR, Day/Night (ICR), EIS, Electronic Defog, ROI, AGC, AWB, BLC, HLC
- Up to 300 Presets, 5 Auto scan, 8 Tour, 5 Pattern,
- Support Starlight Technology
- IR Range of 150 Mtr.
- Max 300° /s pan speed, 360° endless pan rotation
- Deep-learning-based auto tracking and perimeter protection
- SMD PLUS
- Built-in 2/1 alarm in/out, IP67, IK10, Micro SD Card, PoE+
- Support Face Detection
- Mobile Software: iCMOB, gCMOB
- CMS Software: KVMS Pro



### System Overview

Understanding the need of the hour in the security and surveillance industry, this series has been integrated with the starlight technology along with efficient and powerful deep-learning algorithms to make your life hugely easier. The numerous AI-based smart functions of this camera let you capture a face, protect the perimeter and even count people, greatly improving the accuracy of your video analysis. This camera also complies with international certification standards such as IP67 and IK10, as this camera is not just dust-proof and water-proof but also shock-proof and vandal-proof (which is given in selected models).

### Functions

#### Starlight Technology

This camera is widely used to provide sharper and clearer picture quality with the help of its exceptional starlight sensitivity as the camera improves night vision in low light conditions. This technology is useful in conditions with extremely low light as the starlight technology turns almost completely dark images into those of clear colors.



# CP-UNP-E3221L15-DFP

2MP WDR 32x IR Network PTZ Camera- 150 Mtr.

## Functions

### Wide Dynamic Range (WDR)

When a scene is partly dark and partly bright, that is the dynamic range that distorts images due to this difference in the lighting. WDR technology provides you balanced lighting for a clear and vivid image throughout the day. WDR technology can be installed at entry/exit points of any building structure, jewellery shops, outdoor location among so many other places.

### Smart Motion Detection (SMD Plus)

CPPLUS has introduced Smart Motion Detection, AI-based SMD, which use an advanced algorithm to differentiate human and vehicular shapes within a scene and send alarms only when a person or vehicle is detected.

### Face Detection

With the help of the deep learning algorithm that is used in this technology, people can easily be detected, tracked, recorded, and captured. It takes only a second to detect one human face. Face detection is useful in cameras to help with auto-focus. This technology is mainly used to identify the presence of a human face.

### Smart Analytical Support

Using an advanced algorithm, smart analytical technology lets you set a multitude of safety parameters and sends you alerts when any of those parameters have been compromised. Not just when there's an occurrence of tripwire or intrusion, but also in the cases of missing or abandoned objects.

### Auto-Tracking

This technology enables you to control the pan/tilt/zoom actions in your camera in varying proportions to let you automatically and continuously track an object in the scener that is in motion or is moving. This function comes with the option of automatic or manual tracking depending on the condition to make it more efficient. This is done on the basis of predefined rules. Once such a rule is triggered, the camera can take over on its own and can track the defined target automatically.

### Instastream

This camera has been designed with the latest and most efficient innovation among the standard video compression designs. Smart encoding algorithms developed by CP PLUS help in saving up to 70% more bandwidth than H.265 along with making it more beneficial for minimizing bandwidth and storage costs. It enhances video coding efficiency while providing high resolution and the rate of frame in the video using Intelligent Region Perception to detect motion in each frame.

## About CP PLUS

The brand that is on its way to lead the world when it comes to the security and surveillance industry, CP PLUS, keeps bombarding the market with the most reliable range of products that have been designed carefully and methodically to automate the whole surveillance and security process, no matter how big your premises are.

It was the initiative to help the public in the area where they are the most vulnerable and to empower the sense of safety in our hearts that had conceptualized CP PLUS. And embarking on its mission to make the world a safer and more secure place has taken the brand's journey to unprecedented levels even when compared to international competitors.



# CP-UNP-E3221L15-DFP

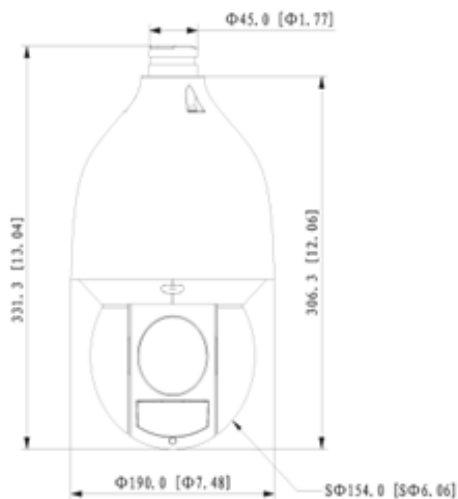
2MP WDR 32x IR Network PTZ Camera- 150 Mtr.

Feature	Specification
Image Sensor	1/2.8" PS CMOS (0.9071 centimeters)
Effective Pixels	1920 (H) × 1080 (V), 2 Megapixels
S/N Ratio	≥55dB
RAM & ROM	1GB & 4GB
Minimum Illumination	Color: 0.005 lux@F1.6 B/W: 0.0005 lux@F1.6 0 lux (IR light on)
Max. Aperture	F1.6–F4.0
Focal Length	4.8mm ~ 154mm
White Balance	Auto/Indoor/Outdoor/Tracking/Manual/Sodium lamp/Natural light/Street lamp
Focus Control	Auto/Semi-Auto/Manual
Close Focus Distance	0.8m- 5.0m
Iris Control	Auto/Manual
DORI Distance	2124m (Detect), 839m (Observe), 425m (Recognize), 212m (Identify)
Angle of View	H: 58.44°–3.04°; V: 33.45°–1.71°; D: 66.45°–3.49°
Electronic Shutter	1/1s~1/30,000s
AGC control	Auto / Manual
Back Light Compensation	BLC / HLC / WDR(120dB)
Optical Zoom	32x
Digital Zoom	16x
Pan Travel	0°~360° endless, Pan Speed: 0.1° ~300° /s
Tilt Travel	-15° ~ +90°, auto flip 180°, Tilt Speed: 0.1° ~200°/sec
Manual Speed	Pan: 0.1° ~300° /s; Tilt: 0.1° ~200° /s
Presets	300
Preset Speed	Pan: 400° /s; Tilt: 300° /s
Power-off Memory	Support
Bit Rate	H.264: 3 Kbps–20480 Kbps ; H.265: 3 Kbps–20480 Kbps
Special Features	Electronic Defog, Up to 300 Presets, 5 Pattern, 8 Tour (up to 32 presets per tour), 5 Auto Scan

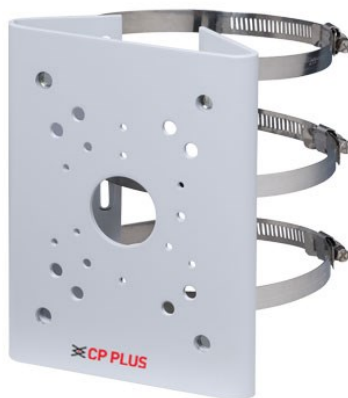
Feature	Specification
IR Range	IR Range upto 150 Mtr.
IR Number	4
Privacy Masking	Up to 24 areas, and up to 8 areas in the same view
Idle Motion	Preset/Tour/Pattern/Scanning
Day/Night: IR Cut Filter	Auto (ICR) / Color / B/W
Video Compression	H.265; H.264+; H.264B; H.264M; H.264H; MJPEG (sub stream)
Encode Strategy	Instream
Streaming Method	Unicast/Multicast
Resolution	1080P (1920 × 1080); 1.3MP (1280 × 960); 720P (1280 × 720); D1 (704 × 576); CIF (352 × 288)
Video Streaming	Main stream: 2M/1.3M/720p (1–50/60 fps) Sub stream 1: D1/CIF (1–25/30 fps) Sub stream 2: 2M/1.3M/720p (1–25/30 fps)
Audio Compression	G.711a; G.711Mu; G.726; AAC; MPEG2-Layer2; G722.1; G729; G723
Two-way Audio	Support
Motion Detection	Support
ROI	Support
SMD PLUS	Support
Smart Capture	Support human, motor vehicle and non-motor vehicle image capture.
Audio Streaming	1/1 channel In/Out
Auto Tracking	Support
Alarm	2/1 channel In/Out
Alarm Linkage	Capture; preset; tour; pattern; recording; triggering on-off value output; audio; sending email
Face Detection	Support
Alarm Event	Motion/tampering detection; audio detection; network disconnection detection; IP conflict detection; memory card state detection; memory space detection; power exception detection
Perimeter Protection	Tripwire and intrusion. Support alarm triggering by target types (human and vehicle). Support filtering false alarms caused by animals, rustling leaves, bright lights, etc.
Protocols	HTTP; HTTPS; IPv4; RTSP; UDP; SMTP; NTP; DHCP; DNS; DDNS; IPv6; 802.1x; QoS; FTP; UPnP; ICMP; SNMP; SNMP v1/v2c/v3 (MIB-2); IGMP; ARP; RTCP; RTP; PPPoE; RTMP; TCP; ONVIF Profile S&G&T; CGI
Networking	RJ-45 (10/100Base-T)

Feature	Specification
Browser	IE: IE7 and later Chrome: 42 and earlier Firefox: 52 and earlier Safari
User/ Host	20 (total bandwidth 64M)
Operating Temperature	-40°C ~ +70°C (-40°F to 158°F)
Operating Humidity	≤95%
Smart Phone	iPhone, iPad, Android Phone
Memory Slot	FTP; Micro SD card (512GB); NAS
Weather Proof Standard	IP67; IK10; TVS 6000V lightning proof; surge protection; voltage transient protection
Dimension	331.9 mm × Φ190.4 mm (13.07" × Φ7.50")
Power Source	24 VDC, 2.5 A (± 25%) PoE+ (802.3at)
Power Consumption	Basic: 13 W Max.: 22 W (illuminator + PTZ working)
Weight	4.7kg

Dimensions (mm/inch)



Accessories : Optional



CP-UA-B3P  
Pole Mount Bracket

**Company Name:**

CP PLUS (Aditya Infotech Ltd.)  
F-28 Okhla Industrial Area, Phase 1,  
New Delhi 110020, INDIA

**Contact Mail ID :-** [customercare@cpplusworld.com](mailto:customercare@cpplusworld.com)